



## Managing Mission Critical Facility Infrastructure with Intelligent Tools for Operational Efficiency

Teledon-FME™ (Facilities Management and Engineering) platform delivers a unique, web-based Facilities and Infrastructure Management solution that monitors your entire infrastructure by reporting power, space, energy, and equipment performance so your facilities team can make critical decisions, optimize resources and gauge the effectiveness of energy efficiency efforts.

Teledon-FME addresses today's critical infrastructure challenges such as:

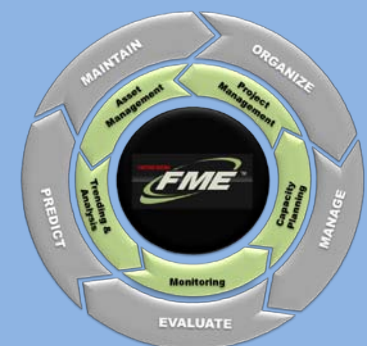
- Knowing total power consumption
- Knowing power consumption at the floor, room, line-up or rack level
- Understanding present capacity and space limitations
- Keeping up-to-date on routine building maintenance
- Keeping management informed
- Maintaining a current list of equipment inventory
- Assigning maintenance tasks
- Tracking site performance vs. established goals

*“FME is used in more than 1400 Facilities in 49 States and 22 countries. FME is the most proven and mature facility management tool on the market”*

*“Functionally I think my team and others agree, FME is the best of the bunch.”*

*- Colocation Executive*

- ✓ Asset Management
- ✓ Project Management
- ✓ Trending and Analysis
- ✓ Monitoring
- ✓ Capacity Planning



## The Teledon-FME Platform: No hype, just the functionality you need

The FME was designed and developed as a highly effectual tool for improving your organization's facilities management and engineering processes. We help clients (through the use of highly targeted modules) gain insight into various data sources to quickly identify inefficiencies and make adjustments based on accurate and timely information.



### Intelligent Business Analytics

Advanced analysis and reporting of critical facilities operations. Capture and trend numerous data points, generate custom reports, communicate key metrics, and evaluate the results of your changes.

### Live Power and Environmental Monitoring

Real-time Load and Capacity of all Power systems. Capacity planning and event investigation using trending data. Ease of Integration using API, SNMP and other techniques. Display Alerts or send Alarms based on threshold set values



*"We thought your product was more comprehensive than anything else on the market and other competitors' point solutions could be plugged into your framework."*

*- Industry Analyst*



*“The RICHEST application I’ve seen in a long time and a management team that knows the industry.”*

*-Colocation Board Member*

### Teledon-FME Core Modules Key Features

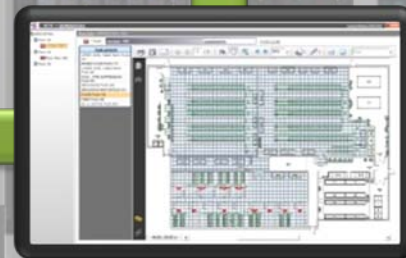
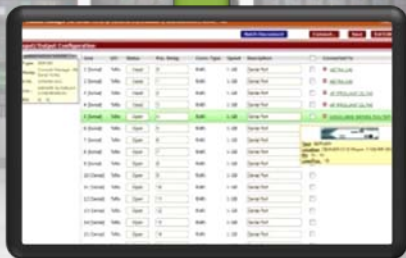
- ❖ Integrates with live data
- ❖ Measures PUE and/or DCiE
- ❖ Cloud-based access
- ❖ Capacity Planning
- ❖ Intuitive, web-based Graphical User Interface (GUI)
- ❖ Online collaboration and scheduling tools
- ❖ Easily manages work orders and resources
- ❖ Centralized repository for site AutoCAD drawings

#### Asset Management

Utilize an interactive pictorial representation of what each framework looks like as it appears on site.

#### Critical AC - DC Power Systems

Manage critical electrical power systems from the utility transformer to the distribution outlets



#### Network Connectivity

Manage equipment port assignments along with cabling information such as cable type and speed

#### Floor Space Management

Centralized repository for site floor plan drawings and revisions. Mark up drawings and collaborate online

## We're not done yet... Our complete FME suite provides you with the tools to manage your facilities more efficiently

- 
- A background image of a server room with rows of server racks stretching into the distance under a blue, futuristic light effect.
-  **Change Management**  
Work flow and work order management tool that serves as a project link to interface with different modules within FME.
  -  **Usage Tracking (Chargeback)**  
Monitor power usage of customers and tenants using FME live data reporting tools.
  -  **Multi-Tenant Customer Portal**  
Provide customer and individual business groups access to their infrastructure using a secure user portal.
  -  **Disaster Recovery Planning**  
Simulate failures and changes in your critical infrastructure and view the results with innovative failover and power management tools.
  -  **Project Management**  
Schedule projects and track progress of individual projects, phases and tasks. Assign owners, vendors, resources, due dates and even create budgets to associate with projects and different internal groups.
  -  **Preventive Maintenance**  
Schedule and manage maintenance inspections and provide inventory records with historical data as well as current equipment conditions.
  -  **Multimedia Cloud Storage**  
Users are allowed to store, view, upload, and download video, photos, audio, AutoCAD drawings, documents and other files of particular facility activity into one central location.
  -  **Mechanical and Cooling**  
Manage facility mechanical cooling infrastructure inventory including chillers, cooling towers, air handlers, condensers, motors, pumps, heat exchangers and much more.
  -  **Emergency Power and Fire**  
Manage facility emergency system inventory including fixed and portable generators, fuel tanks, inverters, batteries, UPS systems, fire suppression systems, smoke alarms, sprinklers, fire extinguishers and much more.